

**Bloomberg**

# **University Presentation**

**Bloomberg Terminal**  
March 2021

**Speakers:**

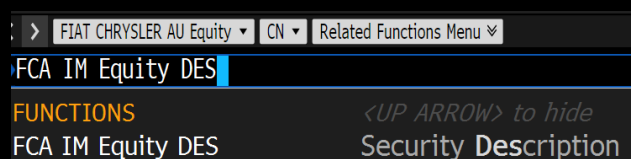
**Luca Benatti (Fixed Income Advanced specialist)**

**Andrea de Conciliis (Sales Account Manager Italian Regions)**

# 1. Basics

## TICKER + FUNCTION

FIA IM Equity DES <GO>

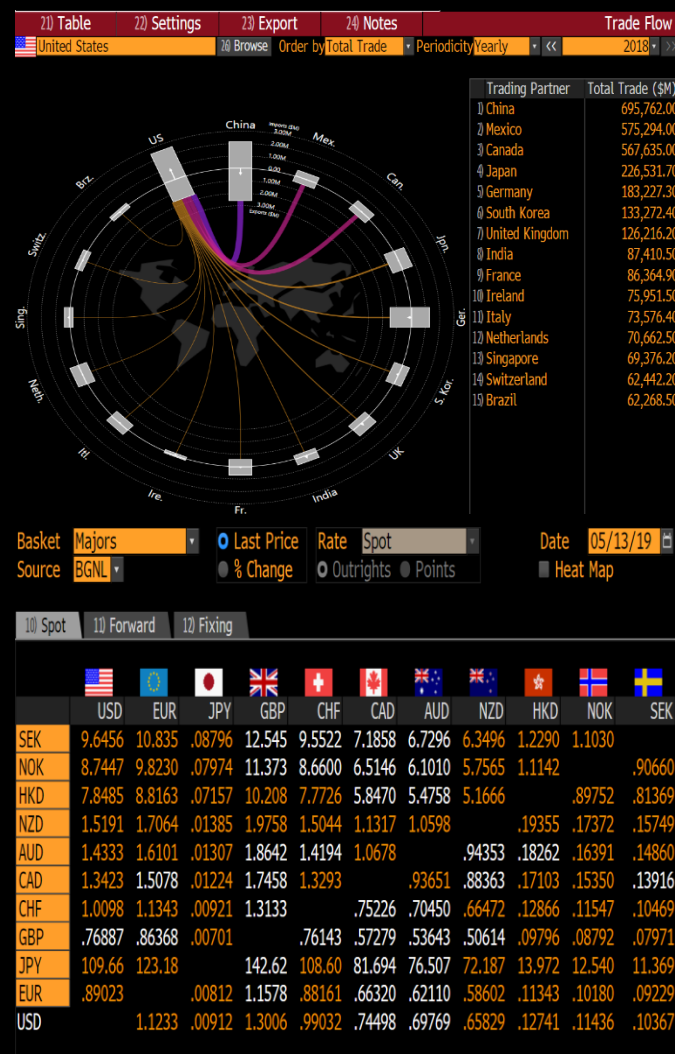


- DES - Description and Overview
- HP - Historical price table
- GP - Historical price chart
- SECF - Search all securities
- FLDS – Find Fielders
- N – News
- ECST – Economic Statistics



## 2. Currencies / Economics

- FXFC - Forecasts
- FXC - Matrix of currency rates
- WCRS - Rank and compare
- WIRP - Interest rate probabilities
- ECTR - Trade flow
- ECO - Calendar events
- BECO - Economics studies
- ECFC - Statistics
- CENB - Central Banks



# 3. Equity: Performing Analysis

- WEI - World Equity Indices
- CN - Company news
- EQS - Equity Screening
- IPO - Equity offerings
- CACT - Corporate Actions
- FA - Fundamentals
- RV - Peers / Competition
- RELS - Capital structure
- MA – Mergers Acquisitions
- ESG – Scores ESG for single sec

LLP <GO> to Open in Launchpad

News • Settings

World Equity Indices

| Index            | 2Day | Value      | Net Chg | %Chg   | Δ AVAT  | Time    | %Chg 1M | %Chg 3M |
|------------------|------|------------|---------|--------|---------|---------|---------|---------|
| 1) Americas      |      |            |         |        |         |         |         |         |
| 11 DOW JONES     |      | 26307.79   | -122.35 | -0.46% | -5.58%  | 05/02 d | +0.34%  | +1.35%  |
| 12 S&P 500       |      | 2917.52 d  | -6.21   | -0.21% | +2.41%  | 05/02 d | +1.54%  | +2.55%  |
| 13 S&P/TSX Comp  |      | 16410.88 d | -91.87  | -0.56% | +16.81% | 05/02 d | +0.80%  | +1.06%  |
| 14 IBOVESPA      |      | 95527.62 d | -825.71 | -0.86% |         | 05/02 d | +1.10%  | +0.26%  |
| 2) EMEA          |      |            |         |        |         |         |         |         |
| 20 Euro Stoxx 50 |      | 3504.64 d  | +15.71  | +0.45% | -13.26% | 13:47   | +2.01%  | +2.34%  |
| 22 FTSE 100      |      | 7414.04    | +62.73  | +0.85% | -23.90% | 14:02   | -0.06%  | -0.06%  |
| 23 CAC 40        |      | 5553.75 d  | +14.89  | +0.27% | -17.68% | 13:47   | +1.55%  | +1.88%  |
| 24 DAX           |      | 12400.97 d | +55.55  | +0.45% | -16.41% | 13:47   | +3.74%  | +4.07%  |
| 25 IBEX 35       |      | 9427.30 d  | +9.10   | +0.10% | -29.37% | 13:47   | -0.64%  | -0.32%  |
| 26 FTSE MIB      |      | 21790.95   | +80.57  | +0.37% | -24.55% | 14:02   | +0.16%  | +0.49%  |
| 27 AEX           |      | 570.48 d   | +3.97   | +0.70% | -32.34% | 13:47   | +1.63%  | +1.96%  |
| 28 OMX STKH30    |      | 1676.12    | +10.68  | +0.64% | -21.39% | 14:02   | +3.31%  | +1.01%  |
| 29 SWISS MKT     |      | 9777.65 d  | +31.59  | +0.32% | -15.64% | 13:47   | +2.17%  | +1.01%  |
| 30 RTS \$        |      | 1244.35    | +6.30   | +0.51% | -56.64% | 14:02   | +1.63%  | +2.65%  |
| 3) Asia/Pacific  |      |            |         |        |         |         |         |         |
| 31 NIKKEI        |      | 22258.73 d | -48.85  | -0.22% |         | 04/26 d | +4.97%  | +6.07%  |
| 32 HANG SENG     |      | 30081.55 d | +137.37 | +0.46% | -27.84% |         | +0.32%  | +1.38%  |
| 33 CSI 300       |      | 3913.21 d  | +12.88  | +0.33% | -28.51% | 04/30 d | -1.53%  | -0.90%  |
| 34 S&P/ASX 200   |      | 6335.80    | -2.61   | -0.04% | -8.66%  | 07:53 d | +0.81%  | +0.32%  |

FIAT CHRYSLER AU Equity • CN • Related Functions Menu

FCA IM € 14.016 +0.466 M14.012 / 14.02M 7550x892

At 14:03 Vol 12,515,079 O 13.63M H 14.076M L 13.104M Val 171.072M

Search News Actions • Custom Searches Translate • Key Themes

Page 1 News

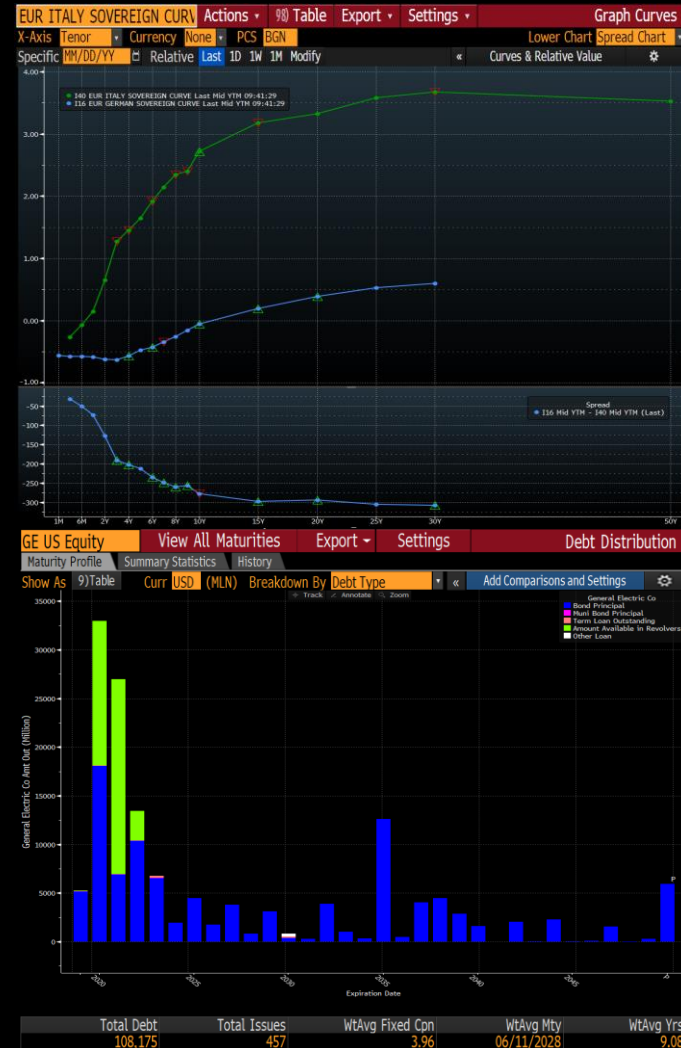
FIAT Chrysler Automob...

Top Ranked News | More »

| Rank              | News  | Source | Time  |
|-------------------|---|--------|-------|
| 1)                | Fiat Shares Rally as Manley Confirms Outlook After Profit Miss                  | BN     | 13:50 |
| 2)                | Fiat Chrysler Reaffirms Targets, CEO Confident; Shares Rise                     | BFW    | 12:20 |
| 3)                | Fiat Chrysler Au: Q1 2019 Presentation  | CO3    | 11:31 |
| Time Ordered News |   |        |       |
| 4)                | +FCA TO KEEP ARRANGEMENT WITH SANTANDER IN US                                   | BN     | 14:03 |
| 5)                | +MANLEY: FCA NOT PURSUING FINCO IN US   | BN     | 14:02 |
| 6)                | Seeking Alpha: Fiat Chrysler Automobiles N.V. 2019 Q1 - Results - Earnings Call | BLG    | 13:55 |
| 7)                | +FCAU: NEXT 2-3 YRS TO YIELD 'OPPORTUNITIES' FOR PARTNERSHIPS                   | BN     | 13:53 |
| 8)                | Fiat Shares Rally as Manley Confirms Outlook After Profit Miss                  | BN     | 13:50 |
| 9)                | NASDAQ: Pre-Market Most Active for May 3, 2019 : NOK, SQQQ, QQQ, SAN, TSLA, ... | FM1    | 13:47 |
| 10)               | +FIAT CHRYSLER CEO MIKE MANLEY SPEAKS ON EARNINGS CALL                          | BN     | 13:42 |
| 11)               | +MANLEY: FCA TO INCREASE FLEET SALES OF RAM CLASSIC TRUCK                       | BN     | 13:42 |
| 12)               | LEVFIN SNAPSHOT: Chemour Bonds Decline on Weak 1Q Earnings                      | BFW    | 13:41 |
| 13)               | +FIAT CHRYSLER: HAVE 25K ORDERS FOR JEEP GLADIATOR                              | BN     | 13:37 |
| 14)               | Daily Mail: Fiat Chrysler pins hopes on new models after weak Q1                | DML    | 13:37 |
| 15)               | +FIAT CHRYSLER WILL LOOK TO REFINANCE DEBT THIS YEAR                            | BN     | 13:35 |
| 16)               | Class 8 Orders, Tesla Offering: N.A. Industrials Pre-Market                     | BFW    | 13:28 |
| 17)               | Malay Mail: Skidding sales brake Fiat Chrysler profit                           | NS6    | 13:25 |
| 18)               | ANSA: FCA Q1 net profit down 47% to 508 mn                                      | NSS    | 13:23 |
| 19)               | Investing.com: Stocks - Amazon, Fiat Chrysler Jump in Premarket, Tesla Gains... | FM9    | 13:20 |

## 4. Fixed Income

- WB - World Bond Indices
- SRCH - FI Screening
- CRPR - Credit rating of issuer
- CRVF - Curve finder
- YAS - Price & Calculate yield
- ALLQ - Live quotes
- BTMM - Money Markets
- DDIS - Debt distribution
- NIA – New issuance Analysis



# 5. Excel / Export Data

## EXCEL ADD-IN



## FORMULA

=BDP()

=BDH()

=BDS()

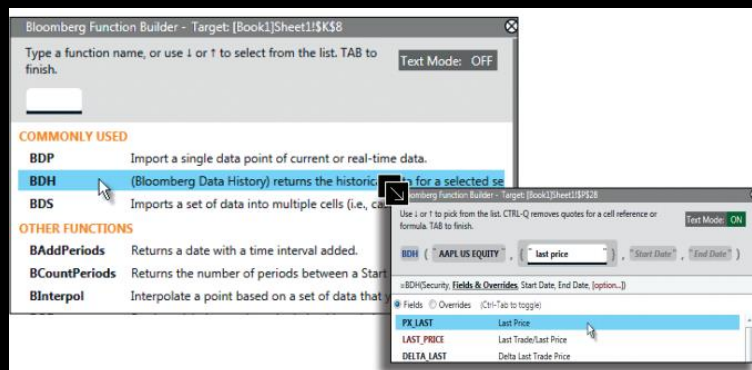
=BQL()

## FUNCTIONS

FLDS Filed finder

HELP DAPI Help on formulas

XLTP XAPI Self study



The BLOOMBERG TERMINAL service and Bloomberg data products (the “Services”) are owned and distributed by Bloomberg Finance L.P. (“BFLP”) except that Bloomberg L.P. and its subsidiaries (“BLP”) distribute these products in Argentina, Australia and certain jurisdictions in the Pacific islands, Bermuda, China, India, Japan, Korea and New Zealand. BLP provides BFLP with global marketing and operational support. The following are trademarks and service marks of BFLP, a Delaware limited partnership, or its subsidiaries: BLOOMBERG, BLOOMBERG ANYWHERE, BLOOMBERG MARKETS, BLOOMBERG NEWS, BLOOMBERG PROFESSIONAL, BLOOMBERG TERMINAL and BLOOMBERG.COM. Absence of any trademark or service mark from this list does not waive Bloomberg’s intellectual property rights in that name, mark or logo. All rights reserved.